



## EMERGENCY VEHICLES

Lighting, safety and marking  
solutions



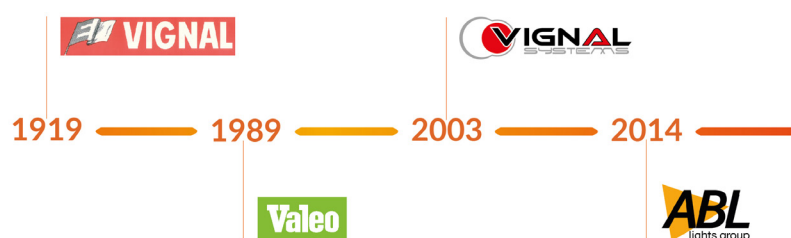
## GROUP PRESENTATION

Vignal Group is a global player and a partner of major manufacturers of commercial and off-road vehicles.

We design and manufacture innovative lighting and safety solutions while ensuring compliance with environmental regulations and implementing an ambitious corporate social responsibility (CSR) policy.

Our Group has grown steadily through organic growth and has carried out several external growth operations.

The various acquisitions we have made have enriched our product ranges, expanded our reach into new market segments, and strengthened our global presence. Our goal is to drive companies, along with the men and women who make them up, toward ever higher levels of innovation and expertise.







## COMMITTED CSR POLICY

Each of our actions is meaningful and reflects our commitment to respecting the planet, people, laws and regulations.



Lighting **TODAY**, preserving **TOMORROW**

**-45%** carbon intensity  
in last 3 years



To support your CSR approach





# LED LIGHTBAR

OPTION WITH  
INTEGRATED SPEAKER

## 360° visibility – Maximum safety

MULTIPLEXED STRUCTURE  
WITHOUT CABLE

LIGHT OUTPUT  
CLASS 2

WATERPROOF   
IP6K9K

RELIABILITY & ROBUSTNESS  
3-YEAR WARRANTY

✓ Designed in France 

✓ Manufactured in Europe 

VIGNAL CEA

VIGNAL GROUP - HQ  
VIGNAL SYSTEMS  
VIGNAL SESALY

### CSR

ECO-DESIGN AND RECYCLABILITY



# STELLAR

By  VIGNAL

LED

EMC  
CISPR25

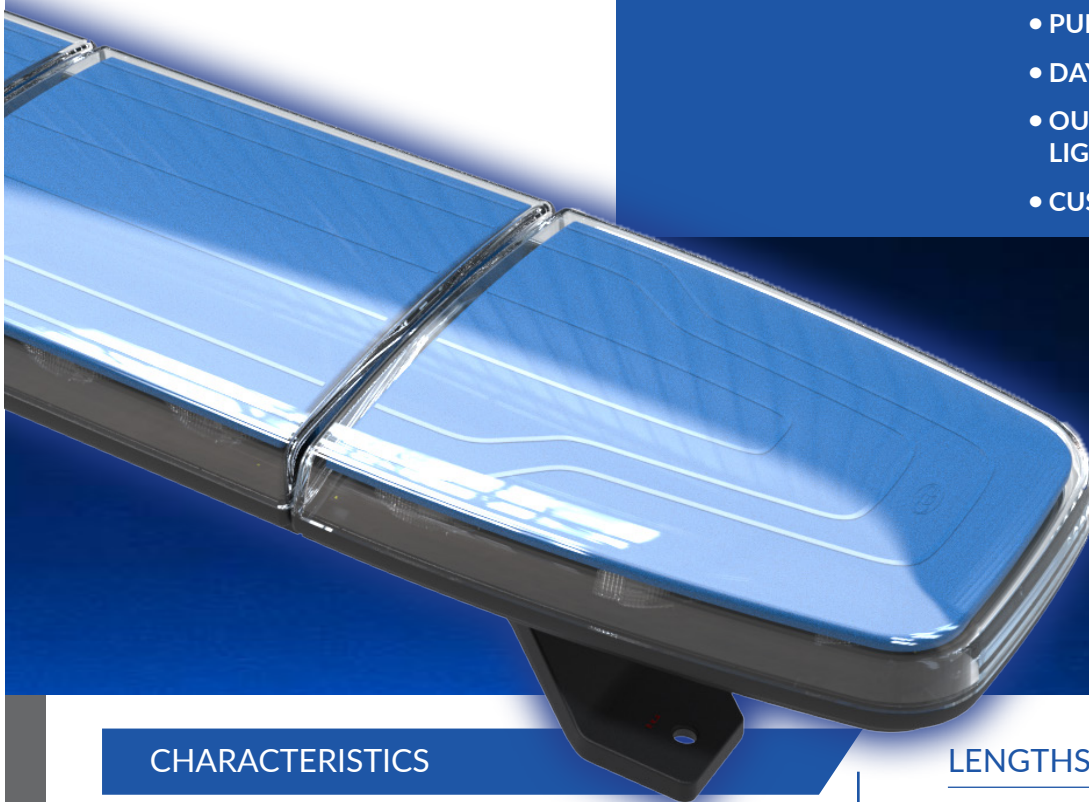
R65  
CLASS 2

R10

10-36V



- MULTIPLE SIREN TONES AVAILABLE
- PUBLIC ADDRESS
- DAY/NIGHT MODE
- OUTPUT AVAILABLE FOR FLASH LIGHTS
- CUSTOMIZABLE LOGO

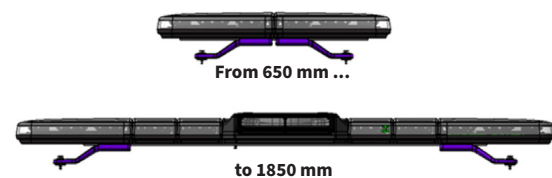


## CHARACTERISTICS

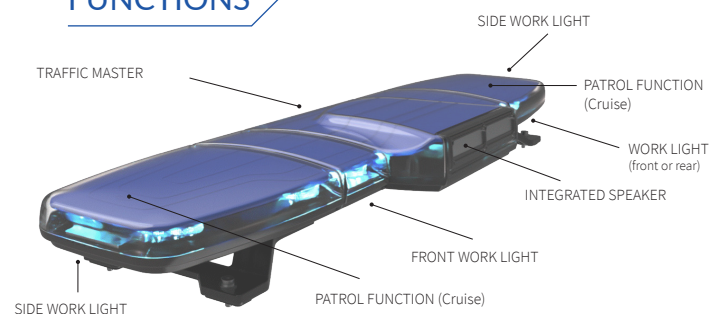
Voltage	10/36 VDC
LED Color	Blue
Lens Color	Transparent
Cover color	Blue
Material	Polycarbonate
Bracket Material	Reinforced glass fiber GF30
IP Protection	IP6K9K
Vibration	Mechanical and shocks ISO 16750-3
Operating T°	-30°C to 60°C
Approval	ECE R65 Class 2
EMC	ECE R10 --> CISPR25 Class 3



## LENGTHS



## FUNCTIONS



### CONTROL BOX LCD SCREEN

- Multifunction box with LCDTFT screen,
- 16 buttons
- With public address



### SIREN SYSTEM + AMPLIFIER

- Compact and light
- Horn ring transfer control
- Siren amplifier with extruded PA with metal cover.
- 16-way socket with 4 outlets for panel, switch, microphone and USB programming
- 12V
- 4 programmable inputs



### MANAGEMENT MODULE

- To control external devices
- 8 outputs and 4 programmable inputs
- All outputs and inputs can be controlled via a single control box
- 8 x 10A output module - CANbus
- Dim. 75 x 30 x 65 mm (L x H x W)
- 12/24V



Customizable backlit sun visor



- Dim. : 300 x 90.4 x 45.6 mm
- 12V
- Cable length 470 mm
- POWERPORT 12V magnetic connector
- Customizable Message



Designed for the operational needs of law enforcement and emergency services, the customizable backlit sun visor can be installed in seconds on the vehicle's sun visor thanks to its mounting system and POWERPORT 12V magnetic power cable. It offers maximum visibility during interventions both day and night, allowing crews to be identified quickly and safely. Its robust design meets field requirements and ensures reliable use even in difficult conditions. This device is ideal for enhancing the signaling of priority vehicles and facilitating the management of emergency situations.

Backlit sun visor with integrated penetration lights



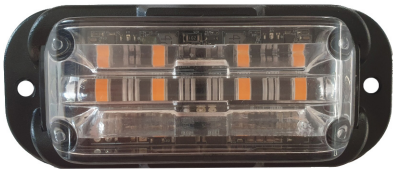
Mounting	Velcro
Voltage	Dual voltage 12/24V
Number of lights	2
Total number of LEDs	8 - (4 per light)
LED color	Blue
Flash modes	19 Flash Modes
Operating temperature	-30°C to +70°C
Certifications	ECE R65 Class 1 - ECE R10
Message on panel	On request
Max Consumption	12W
Power supply	Cigarette lighter socket

This signaling equipment provides long-distance visibility and identification, allowing intervention in a hazardous area in complete safety. This accessory for intervention vehicles is attached to the sun visor using a system of velcro straps at the back of the panel.

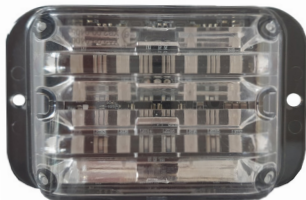
This illuminated panel can be customized with text on the front, allowing the displayed message to be highlighted more effectively once lit.



SESA PULSAR LED - directional light



- D16004
- D16005
- D16075
- D16056

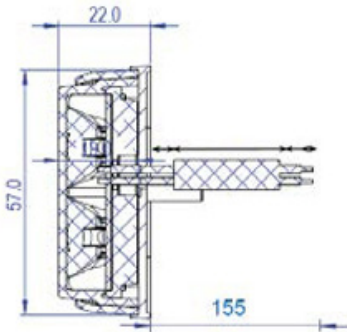
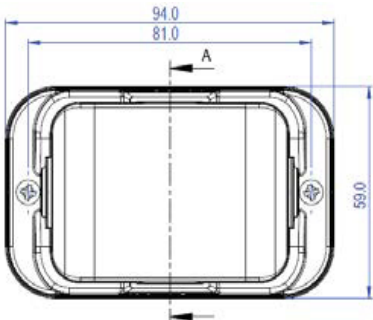


- D16018
- D16017
- D16076

- 12/24Vdc LED directional light visible at 180°
- Extra flat & ultra light design
- Robust and waterproof
- 3 colors: orange, blue and dualcolor
- 4 ECE R65 approved flash modes

TECHNICAL CHARACTERISTICS

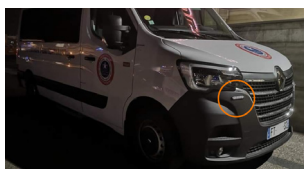
Voltage	12/24V
LED colour	Class 1 amber, blue / Class 2 amber, blue, dual colour A/B
Lens material	Polycarbonate
Housing material	Aluminium
Light patterns	4 lights patterns : 120 flash/minutes, 120 double flash/min, 120 quad flash/min, steady cruise mode
IP protection	IP69K
Operating T°	-30°C to +50°C
Approvals	ECE R10 (EMC, CISPR25 class 3), ECE R65 CL1 or CL2
Dimensions	94 L x 39 H x 22 D mm or 94 L x 59 H x 22 D mm



6 LED penetration light

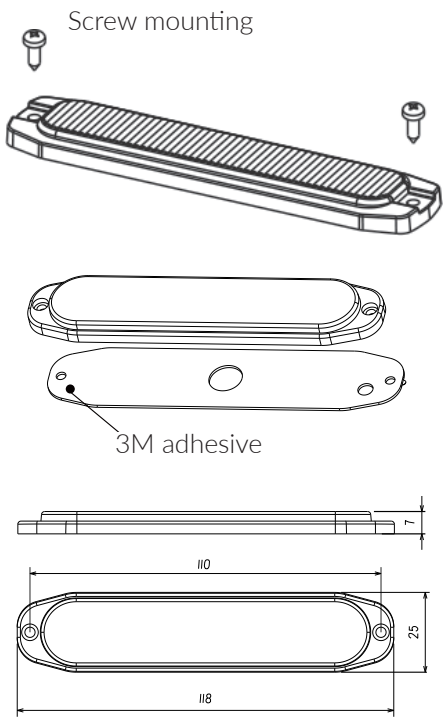


The proposed 6 LED penetration light is a lighting device for vehicles, designed to be mounted on the grille of your emergency vehicle. With a light angle of 180°, this intervention lighting equipment allows for wide light dispersion over long distances, day or night, even in foggy conditions.



TECHNICAL CHARACTERISTICS

Mounting	By screws or 3M adhesive
Voltage	Dual voltage 12/24V
Number of LEDs	6
LED color	Blue - Amber
Light angle	180°
Lens type	Fresnel lens
Operating T°	-30°C to +70°C
Approval	ECE R65 Class 2
Center distance	110mm
Consumption	9W
Dimensions	118 x 25 x 7mm





LUMIOPT - Windshield penetration light

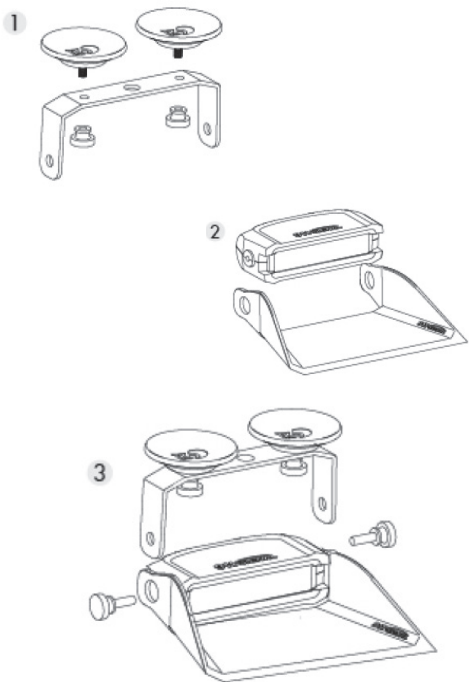


This windshield-mounted warning light is a very robust and easy-to-use warning light. R65 approved thanks to its various flash modes, this windshield warning light is widely used by emergency services, fire brigades, law enforcement, and all professionals with a priority general interest vehicle.

This flashing LED warning light to be mounted on the windshield of a priority general interest vehicle is the ideal warning light for any emergency light signaling. Available in two different sizes and with different numbers of LEDs, this product is the recommended vehicle flash signaling light for professionals to facilitate passage on the roads and warn other users of the presence of emergency, rescue, or law enforcement services.

TECHNICAL CHARACTERISTICS

Mounting	By suction cups
Voltage	Dual voltage 12/24V
Max Consumption	44W
Number of LEDs	9/18
LED color	Blue
Light angle	180°
Flash modes	19/21 Flash Modes
Lens Material	Polycarbonate
Housing material	Aluminum
Operating T°	-30°C to +80°C
Approvals	ECE R65 Class 2 - EMC R10
Light Dimensions	120mm / 230 mm
Housing Dimensions	163x118x67mm / 273x118x67mm



Multi-tone siren with integrated speaker



This waterproof signaling siren is a compact device with powerful acoustic output, suitable for small and medium-sized priority vehicles. To enhance this signaling and better warn other road users of the presence of professionals in emergency intervention, it is possible to add a second speaker to this device by connecting it via an external connection.

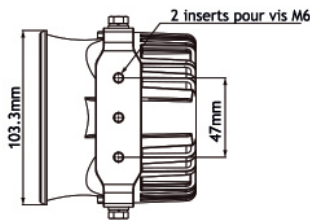
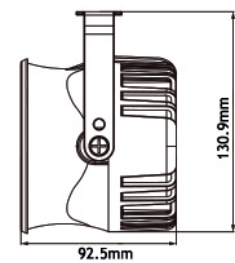


Microphone for Public Address

Public Address Microphone Kit with coiled cord and devices for connection to the siren.

TECHNICAL CHARACTERISTICS

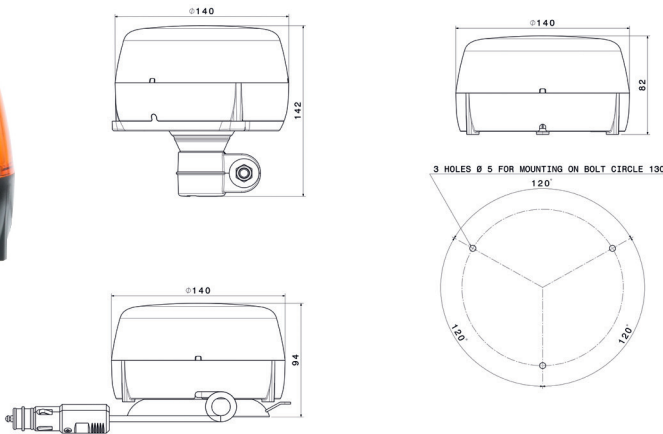
Voltage	12/24V
Consumption	30W
Frequency	200 - 1600 Hz
Sound Intensity	114 dB
Number of tones	30 tones (including 5 French)
Approved tones	<ul style="list-style-type: none"><li>Police: TP POL 21071</li><li>Gendarmerie: TP GEN 21072</li><li>Firefighters: TP SPO 21073</li><li>SAMU: TP UMH 21074</li><li>Ambulance: TP ASA 21075</li></ul>
IP Protection	IP67
Approval	ECE R10
Dimensions	103.3 x 103.3 x 92.5 mm
Weight	1100g







The ATLAS LED beacon meets the high requirements of the manufacturer's specifications. Special attention has been paid to the thermal management of LEDs to ensure optimum service life and operation in the most extreme situations.



Available in different colors

TECHNICAL CHARACTERISTICS

Mounting	3 points on Ø 130 mm - Pole mounting (DIN 14620) - Magnetic + suction cup
Voltage	Multi-voltage 9-32 VDC
LED lifetime	> 50.000 hours
Lens colour	Amber, green, red
Lens material	Polycarbonate
Flash patterns	Different flash pattern : rotating or double flash
IP protection	IP69K (ISO 20653)
Vibration	Mechanical loads and shocks ISO 16750-3
Operating T°	-40°C to +80°C
Approvals	ECE R65 (TA1 or TB1), ECE R10, SAE CLASS 2
EMC level	CISPR25 Class 3 or 5 optional
Polarity inversion	Protected against polarity inversion
Consumption	Rotating : 8,5W at 28,5V - Flashing : 17W at 28,5V
Weight	Magn : 0,780 kg - Pole : 0,550 kg - 3 points : 0,450 kg



Rechargeable wireless magnetic autonomous LED beacon



This autonomous and wireless beacon has 8 blue LEDs and is recommended for emergency services, law enforcement, and firefighters.

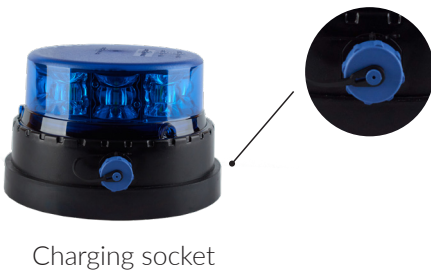
This vehicle signaling device is rechargeable and has a magnetic mount allowing it to be fixed to any metallic or magnetized surface, resistant to speeds over 180 km/h.

This beacon, in addition to being magnetic, is fully autonomous with an operating time of about 8 hours before recharging, with an average consumption of 3A.



TECHNICAL CHARACTERISTICS

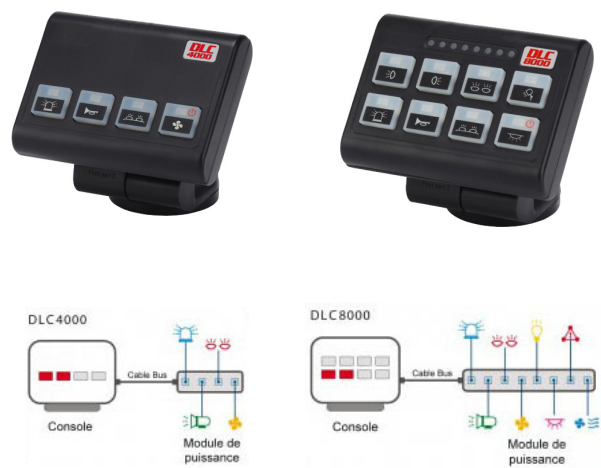
Mounting	Magnetic
Voltage	12/24V
Autonomy	8 hours
Dome color	Blue
Lens material	Polycarbonate
Flash modes	Rotating
Number of LEDs	8
Battery	Lithium
Power supply	Cigarette lighter socket with switch
Approvals	ECE R65 Class 2
Charging cable length	3 meters
Dimensions	85 x 130 x 106mm





# ELECTRONIC CONTROL UNIT

## DLC Range Control Box



The DLC range has been designed for new LED equipment.  
The factory programming can be modified manually.

The DLC 4000 manages standard signaling.

The DLC 8000 allows management of signaling including more equipment.



Voltage	12/24V
Amperage	25 AMP
Console dimensions	95 x 70 x 35 mm (without mounting)
Box Dimensions	85 x 92 x 27 mm
Weight	115 g
Composition	Automatic backlighting, multidirectional base
Operating T°	-25°C to +60°C
EMC	EMC No. E6 03 0331

## 8-button control box



REF: D16058

Output voltage	5 outputs 0.2A + 3 outputs 10A
Source	LED
Switch	Programmable ON/OFF buttons or momentary switch, touch-sensitive rubber and illuminated buttons
Mounting	Suction cup or adhesive pad
Dimensions	95 x 25.5 x 68.8 mm
Specific Functions	35 Icon stickers, Control of 8 elements

## 360° Vision Kit

### Complete 360° HD vision system

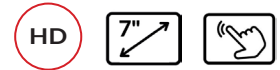


REF for complete 360° kit: D16175

#### The complete 360° HD kit includes:

- 1 x monitor D16257
- 4 x cameras D16235
- 4 x HD cables: 1 cable of 5M;  
2 cables of 10M;  
1 cable of 20M

### 7" HD 360° monitor with integrated 360 ECU GPS



- 10-32V
- 7" touchscreen - 16:9
- 2D/3D views
- Brightness: 600 cd/m<sup>2</sup>
- Contrast: 700:1

- Resolution 1024 x 3 (RGB) x 600
- Power consumption: Max. 25 W
- Video input: Max. 4CH×1080P
- Speaker: 1W/8Ω

REF: D16257

### HD camera for 360 HD system



- High definition 1080P
- Pixels: 1920 (H) x 1080 (V)  
Viewing angle: 170° / 150°
- No AUDIO
- Anti-vibration: ISO 16750-3 2012 (5.9G)

REF: D16235

### HD cables and calibration kit

D16202	HD CABLE 10M
D16203	HD CABLE 20M
D16178	CALIBRATION KIT FOR 360° SYSTEM

**360°**  
0 blind spots around the vehicle



### 360° ECU with integrated recorder + GPS



Detects and records all abnormal situations in real time

- 10-32V
- Power supply: less than 15W (without camera)
- Video inputs: up to 6 cameras 1080P
- System: PAL / NTSC
- Video output: CVBS/VGA/AHD
- Compression: H264/H265
- Audio inputs: 4CH
- GPS function

TRIFLASH ROOF TRIANGLE WITH ELECTRIC LIFTING SYSTEM

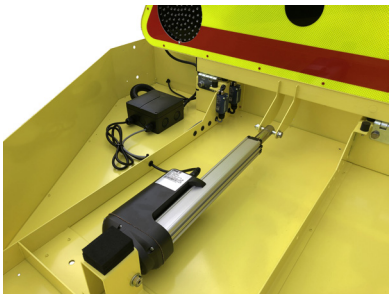


LED triangle with fairing, 700mm, 1000mm or 1250mm  
Electric lifting system, 12V and 24V  
Screen printing type AK14, AK31 or AK5 with mentions (ACCIDENT, FIREFIGHTERS,...)  
Prismatic fluorescent film, Class T2 or Class 3  
Double-sided housing (single-sided on request)



TECHNICAL CHARACTERISTICS

Triangle size	700mm ; 1000mm ; 1250mm
Fairing colour	Red or Yellow
Led light Ø	120mm or 200mm Ø
Number of LED per LED light	48 LED or 96 LED
LED colour	Blue ; Amber ; Dual-color Amber/Blue
Lens material	Polycarbonate
Flashing pattern	Alternating single flash and strobe mode
Mounting	Roof-mounted via drilling
Voltage	12-24 V
IP Protection	IP69K
Weight	1.9 kg
Dimensions	370 (H) x 160 (L) x 80 (P) mm
Warranty	3 years





120mm LED FLASH LIGHT



This multi-purpose light marking device features a 120mm diameter LED light allowing luminous signaling in an intervention area.

This LED Flash Light can be placed on the ground or attached to a traffic cone using an optional mounting bracket. This lighting device is recommended for emergency services, law enforcement, as well as construction personnel to alert the presence of an intervention or work area on the roads.

This flash light has two flashing modes: Normal and Strobe alternately, to be visible to as many people as possible.

TECHNICAL CHARACTERISTICS

Light Diameter	120mm Ø
Number of LEDs	48 LED
Light color	Blue; Amber; Dual color Amber/Blue
Lens material	Polycarbonate
Flashing patterns	Alternating Simple Flash and Stroboscopic mode
Blinking frequency	60/min
Power supply	4R25 batteries, Rechargeable on accumulators or by Induction
Battery life	200 hours
Weight with bat-teries	1.9 kg
Dimensions	370 (H) x 160 (W) x 80 (D) mm
Warranty	3 years

SPIRALED Light Beacon



Available in different colors



This case contains 6 LED light beacons, ideal for light signaling in any situation. These LED lights make it possible to mark out a hazardous area or alert to any event on the roads such as works or an ongoing construction site. Mainly used by Firefighters, Police, Gendarmerie, emergency services or even construction and road safety personnel, this case containing 6 highly resistant LED signaling beacons is the flagship product for effective and suitable light signaling. Equipped with a magnetic area, these 6 light beacons can be attached to a magnetic surface such as a vehicle or any magnetized area. These products are completely waterproof, allowing them to function even in rainy weather. Moreover, thanks to their protection around the LED light, these beacons are unbreakable even after a heavy vehicle passes over them.



On request:  
The Spiraledfixcone (part to be fitted onto the cone for magnetic attachment of the Spiraled beacon). Note that this product does not prevent the cones from stacking.

TECHNICAL CHARACTERISTICS

Power supply	Rechargeable battery - Lithium-ion
Autonomy	50h depending on the flashing program and color
Beacon and LED color	Amber, Blue, Green, White, Yellow or Red
Blinking programs	9 programs
Light angle	360°
IP Protection	IP68
Beacon dimensions	110 x 110 x 30mm
Case dimensions	450 x 375 x 65mm
Packing	6 Beacons / Case
Recharging	Directly in the case via mains charger or cigarette lighter cable

Collapsible signaling cone



This collapsible Lubeck cone is essential for optimal safety signaling.

Used by many professionals such as Firefighters, Law Enforcement, and construction personnel, this collapsible signaling cone fully meets the expectations of standard monobloc Lubeck cones.

For greater safety, our collapsible cones comply with French monobloc cones (same height and same positioning of class 2 retro bands).

Appearance with light reflection on collapsible cones



Cone supplied with carrying bag



TECHNICAL CHARACTERISTICS

Folded height	60mm	
Retroreflective bands	Class 2, compliant with EN471 standard	
Lighting system	LED inside the cone powered by 2 AAA batteries	
Body material	Nylon	
Base material	Recycled rubber painted orange	
Available height	50cm	75cm
Weight	1.7kg	4.3kg
Base dimensions	285x285mm	395x395mm



Automatic Deployment Triflash Triangle



- Automatic deployment and lighting in 2 seconds
- Panels requiring no ballast
- Panels equipped with a carrying handle
- Panels with light-emitting diodes powered by 2 4R25 batteries (in box), ON/OFF switch
- Autonomy between 100 and 150 hours
- Very strong and non-deformable panels
- Solid electro-galvanized/bi-chromated steel support
- Resin-sealed lights waterproof and dustproof IP68
- LEDs protected by polycarbonate plate
- Stable signaling whatever the conditions,
- Vertical panel at 55 cm from the ground
- Non-aggressive panels, made of composite materials
- Panels covered with approved high-intensity class 2 retroreflective films



TECHNICAL CHARACTERISTICS

Folded triangle dimensions	Version 700: 690 x 700 x 110 mm	Version 1000: 960 x 970 x 110 mm
Weight	12.5kg	16kg
Light Size	90mm	90mm or 120mm
Light activation	ON/OFF or Magnetic switch	
Light plates	Polycarbonate	
LED color	Orange, Blue or Bicolor Orange/Blue	
Power supply	2 4R25 batteries / Rechargeable via magnetic connector or jack (on request)	
Autonomy	100 - 150h	
Symbol	AK5, AK14, AK31 (other symbols on request)	
Mention on request	ACCIDENT, SLOW DOWN, POLICE, ...	
Sign on request	Double-sided sign or panel with shutters with 2 symbols of your choice	

500mm Triflash triangle to be placed on the



- Panels with light-emitting diodes powered by 2 4R25 batteries in box
- Autonomy between 200 and 600 hours depending on the flashing program
- On/Off switch, Day/Night sensor (reduced light intensity at night)

2 possible operating modes:

- Day and night operation
- Night-only operation

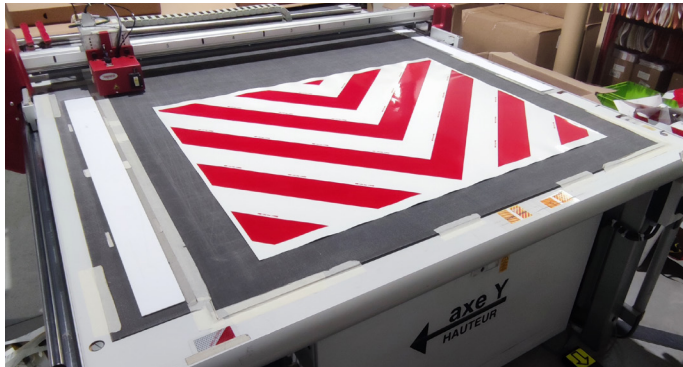
- Very strong, lightweight and non-deformable panels
- Solid electro-galvanized steel support
- Lights diameter 65, 90 or 120mm, resin-sealed, waterproof and dustproof IP68
- Can be installed on a cone for better visibility (500 and 700mm triangle only)
- Non-aggressive panels, made of composite materials
- Panels covered with approved high-intensity retroreflective films class T2P or T3

TECHNICAL CHARACTERISTICS

Triangle dimensions	Version 500 460 x 465 x 108 mm	Version 700 630 x 660 x 108 mm	Version 1000 885 x 940 x 108 mm
Light size	65mm or 90mm	65mm, 90mm or 120mm	65mm, 90mm or 120mm
LED color	Orange, Blue or Bicolor Orange/Blue (only in 95 and 120mm versions)		
Light activation	ON/OFF switch on the power supply box		
Light plates	Polycarbonate		
Power supply	2 4R25 batteries / Rechargeable via magnetic connector or jack (on request)		
Autonomy	200 - 250h		
Symbol	AK5, AK14, AK31 (other symbols on request)		
Mention on request	ACCIDENT, SLOW DOWN, POLICE, ...		
Sign on request	Double-sided sign or panel with shutters with 2 symbols of your choice		
Mounting on request	Magnetic mounting for vehicle roof (max 50km/h), Bracket on the back for mounting on cone		



**VOIR ET  
ÊTRE VU**



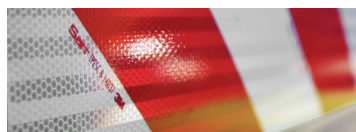
VIGNAL SARR, leader in the French marking market, converter of 3M and AVERY films, offers a complete range of pre-cut kits for marking your vehicles: front, rear, and sides.

With many years of experience, our teams have acquired expertise and know-how in this field by mastering the entire process, from design to manufacturing of vehicle kits.

Our teams design the kits to fit the contours of vehicle bodies, with technical knowledge of the properties of the different retroreflective films.

This range is regularly updated and includes the latest models released, all brands combined.

## Key features:



- Approved
- Durable
- Visibility
- Easy to install
- Applicable to all types of vehicles



## YELLOW AND RED FILM



- Red/yellow chevron retroreflective film
- Easy to handle and apply
- Flexible and conformable
- Red screen printing
- Approved
- 5-year durability

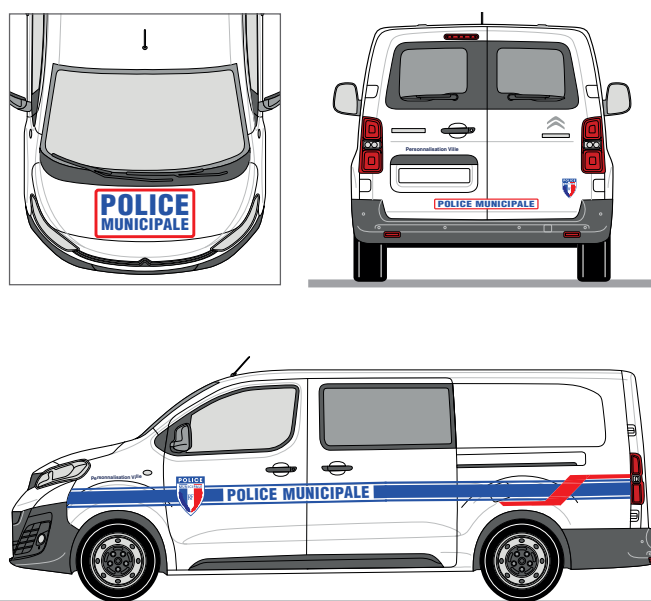




## Marking "MUNICIPAL POLICE"

### REGULATIONS

Order of May 5, 2014 relating to the signage of service vehicles of municipal police officers, adopted pursuant to Article L. 511-4 of the Internal Security Code.



## Approved reflective marking

50 m x 50,8 mm



### Rigid support

E<sub>13</sub>

104R-0001



D12713



D12715



D12714



E<sub>1</sub>

104R



D16087



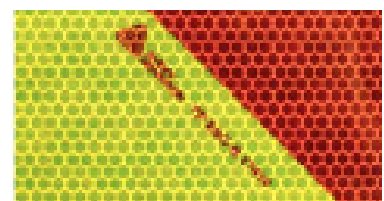
D16086



D16088



## Retroreflective yellow/red chevron marking roll kits



Available dimensions:

- 9m x 14cm
- 9m x 28cm
- 45m x 14cm
- 45m x 28cm



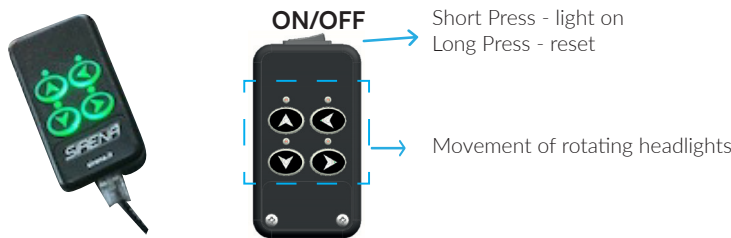
Approved  
Durable  
Visible at over 80m  
Easy installation

360° motorized LED searchlight



The product offers several major advantages. Its brightness is significantly higher than that of other products available on the market, reaching 60,000 candelas. It is equipped with a remote control for remote operation. Its installation is carried out quickly and easily. It benefits from IP69K protection, ensuring optimal resistance. A mounting gasket, sold separately, allows you to correct the device's tilt for maximum adjustment and 360° light distribution. Finally, the device offers increased stability and safety.

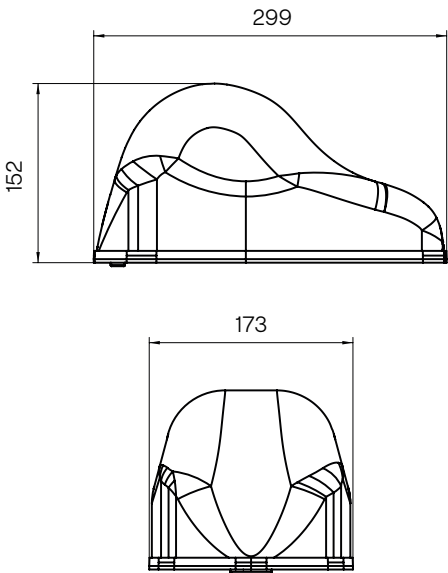
Wired remote control



Consumption	150mA
Dimensions	23 x 85 x 28.5mm
Weight	0.1kg
Output	Wired version
Buttons	4 Buttons backlit

TECHNICAL CHARACTERISTICS

Dome	PMMA
Base	PA GF30%
Light source	4 Samsung 3535 LEDs
Voltage	12/24V
Operation	∞
Horizontal Rotation	360°
Vertical Rotation	110° (+90° up and -20° down)
Light beam opening	16°
Operating temperature	-40°C to +50°C
Consumption	12V: 2.5A and 24V: 1.25A
Luminous output	60,000 cd
Vibrations	ISO 16750-3 4.1.2.7.2
Mounting	Screw
Color	White 4000K
Weight	2.2Kg





Flash Light and Work Light 2 in 1



Working in emergency, maintenance or low visibility situations makes intervention even more dangerous. The new portable safety device, designed to make the operator visible in all work situations. Thanks to its compact shape and robust polyamide construction, PPE benefits from an IP67 protection rating and high resistance to water and dust. Despite rain, snow, and adverse conditions, PPE will always retain its lighting capability.



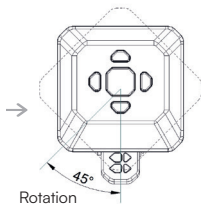
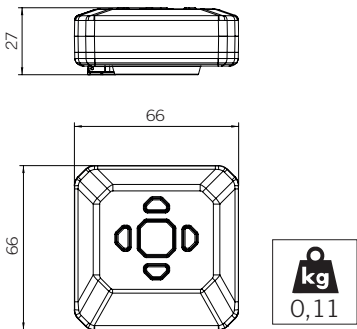
Magnetic plate to be worn under clothing



Magnetic clip

TECHNICAL CHARACTERISTICS

Mounting	With magnetic clip or magnetic plate
Power supply	Lithium-ion battery 1000mAh - 3.7V
Recharge	USB-C
Charging current	0.5 Amp
Charging time	2h30
Battery life	5h
Number of LEDs	12
LED color	Blue/White - Orange/White
Lens	Polycarbonate
Light angle	360°
Modes	4 modes: Double Flash / Rotating / Fixed / Torch
Protection	IP67
Dimensions	66 x 66 x 27mm



ABL LED Compact Work lights range



TECHNICAL CHARACTERISTICS

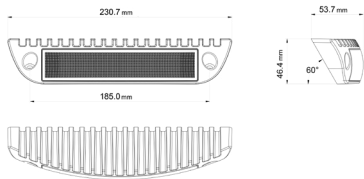
Voltage	Multi-voltage 12-24V
Operational Lumen	11000, 2000 or 3000 Lumen
Connector	Built-in DT 2 ways, Built-in AMP 2 ways
Load Dump	36V continuous/ ISO 7637-2 Pulse 5a
Polarity	Protected against reverse voltage
Vibration resistance	15Grms, from 24Hz to 2000Hz
IP protection	IP68 - IP 69K
EMC	ISO 13766 - ISO 14982 - ISO 12985 - CISPR25 Class 5
Salt Spray Test	ISO 9227
Shock	60G
Operating T°	-40°C to +85°C
Mounting	Pedestal or suspended

SESA MOONLIGHT - Outdoor LED Floodlight



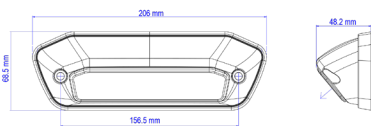
Voltage	12/24V
Led Colour	White LED
Consumption	15W
Lumens	900 Lumen
Lens material	Polycarbonate
Housing material	Aluminium
Dimensions	125.5 x 42.5 x 31.5mm
Approvals and IP protection	CE R10-06, R118, IP69K
Operating t°	-30°C à +70°C
Reference	D16022

SCENELIGHT LED Floodlight



Voltage	12/24V
Number of LED	18 White LED
Consumption	1.4A (12V) et 0.7A (24V)
Lumens	1450 Lumen
Angular light distribution	60° vertical, wide area
Housing colour	Black , Red
Housing material	Aluminium
Lens material	Polycarbonate
Dimensions	230.7mm x 53.7mm x 46.4mm
Operating t°	-40°C à +70°C
Approvals and IP protection	ECE R10 , RoHs, IP68

DIAMOND LIGHT LED Floodlight



Voltage	12/24V
Number of LED	12 LED Blanches
Consumption	0.9A (24V)
Lumens	1700 Lumen
Angular light distribution	40°
Cab colour	Black, Yellow, Red
Cab and Lens material	Polycarbonate
Housing material	Aluminium
Dimensions	230.7mm x 53.7mm x 46.4mm
Approvals and IP protection	ECE R10 , RoHs, IP67
Operating t°	-30°C à +70°C





[www.vignal-group.com](http://www.vignal-group.com)



YOUTUBE  
VIGNAL GROUP



LINKEDIN  
VIGNAL GROUP



#### VIGNAL GROUP (HQ)

19, avenue du 24 Août 1944  
69960 Corbas - France  
E-mail : [contact@vignal-group.com](mailto:contact@vignal-group.com)  
Site web : [www.vignal-group.com](http://www.vignal-group.com)

#### VIGNAL SYSTEMS

19, avenue du 24 Août 1944  
69960 Corbas - France

#### VIGNAL SESALY

12 avenue de l'Industrie  
69960 Corbas - France

#### VIGNAL ABL

3, rue de la Cotonnière - Z.I. du Chemin Vert  
14000 Caen - France

#### VIGNAL SARR

170 avenue du Panorama  
72100 Le Mans - France

#### VIGNAL ABL USA

660 Golf Club Boulevard  
Mosinee, WI 54455  
United States

#### VIGNAL C.E.A.

11, Via Alla Rossa  
6862 Rancate - Switzerland

#### VIGNAL INTERSIGNALETIC

12 avenue de l'Industrie  
69960 Corbas - France

#### VIGNAL CHANGZHOU

Building B2, Huaping  
585 Huanghe West Road, Xinbei District  
Changzhou, Jiangsu Province, China

[www.vignal-group.com](http://www.vignal-group.com)